

## Collections: Autumn 2013

It is with great pleasure that we present *Collections: Autumn 2013*.

The Museum of Modern Art, Wakayama, whose predecessor was the Wakayama Prefectural Museum (founded in 1963), inaugurated in the building of Kenmin Bunka Kaikan (the Cultural Hall for Citizens) in November 1970. It kept mainly focusing on introducing artist related to Wakayama after the Meiji Restoration and started its activities anew at the current building designed by the architect KUROKAWA Kisho in 1994. On the occasion of the relocation, it expanded range of the collection, and it now holds more than 10,000-piece of works from home and abroad.

The exhibits at *Collection Galleries* are changed seasonally with various aspects, and this time with three sections: *Artists from Wakayama and Japanese Modern*, *Postwar Art in America*, and *TANAKA Kyokichi and His Circle*.

The first section *Artists from Wakayama and Modern Art* introduces the tendency of the Modern Art with local artists, which developed coming closer to European Art, or sometimes free from it.

The following section *Postwar Art in America* is related to the exhibition *EITARO ISHIGAKI, Retrospective* which is open until October 20. ISHIGAKI was active in America before the War, and here you will see the following art in America, that had a great impact on art all over the world.

*TANAKA Kyokichi and His Circle* is a related display to the simultaneous show *KAYAMA Kotori: Vestiges of Fleeting Dreams*. From the late Meiji period to the early Taisho period, TANAKA and artist in his circle devoted themselves to art with an intimate relation. KAYAMA Kotori was among them.

Approximately 120 works will be on view.

### General Information

- The Museum of Modern Art, Wakayama, the 1st floor
- September 14, 2013 - December 1, 2013
- Open 9:30 to 17:00
- Closed on Monday (Open on Holiday Mondays, closed on the following Tuesday)
- Adults: 340yen, Students: 230yen [free under 18 (high school pupils), over 65 and the disabled]

### Exhibitions in the same period:

*Eitaro ISHIGAKI, Retorspective*, September 3 - October 20, 2013

*Kayama Kotori: Vestiges of Fleeting Dreams*, September 14 - December 1, 2013  
(simultaneous with *Collections: Autumn 2013*)

### The Museum of Modern Art, Wakayama

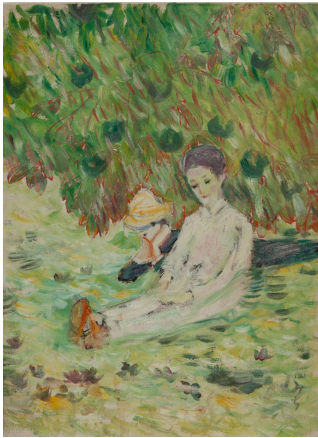
1-4-14 Fukiage, Wakayama, 640-8137,  
JAPAN

Tel: +81 (0)73 436 8690

Fax: +81 (0)73 436 1337

<http://www.momaw.jp/>

## 【Selected Exhibits】



1. TANAKA Kyokichi, *Early Summer*, 1912, oil on canvas



2. SAEKI Yuzo, *Gate with Advertisement*, 1925, oil on canvas



3. KAWAGUCHI Kigai, *Bohemian*, 1928, oil on canvas



4. KANO Koga, *Herdboys Playing a Flute*, Early Showa Period, color pigment on silk



5. MATSUMOTO Ichiyo, *Headland*, 1938, color pigment on silk