

Kayama Kotori: Vestiges of Fleeting Dreams

September 14 - December 1, 2013

Fluttering a while
leaving feeble vestiges
of fleeting dreams
to the spark,
feeling birdie

*Habataki ha / shibashi ga hodo no / yume no kage /
hikarite kenuru / kotori yo aware*

-- from TANAKA Kyokichi, *Vestiges of Fleeting Dreams*

The Museum of Modern Art Wakayama is proud to unveil the work by KAYAMA Kotori (1892-1913), who made a significant mark on the pioneer days of *Sosaku-Hanga* (Japanese creative prints). His closest friends, TANAKA Kyokichi and ONCHI Koshiro brought down his oil paintings, woodcut prints and postcards by his own drawings to our time. This year marks the centennial of his death.

KAYAMA Kotori (real name: Toroku) was born in Iida City, Nagano, in February 1892. He graduated from Iida Junior High School in 1911 and moved to Fukagawa, Tokyo with his family. In 1912, he formed a friendship with TAKEHISA Yumeji, and that resulted in his acquaintance with ONCHI Koshiro and TANAKA Kyokichi. In April of the same year, he enrolled in the preparatory school of Tokyo School of Fine Arts (present Tokyo University of Arts). First he wished to study in its sculpture class, but left there in July, starting to learn woodcut prints under a woodcutter (carver) IGAMI Bonkotsu. While serving his apprenticeship, he came to try original woodcut printing. However it was not long before he was attacked with a disease. He said in a postcard "these days I've got all weak with the nightmare of print making lust" and created works in his sickbed. Sadly he passed away in June, 1913, at just 21 years old.

One of his closest friend TANAKA Kyokichi compiled his verses and sketches in consultation with other friends TAKEHISA Yumeji and ONCHI Koshiro in order to make his remained portfolio, but TANAKA himself as well got taken with illness. TANAKA's sympathy for the similarly diseased friend let him deepen the feelings and led him to making woodcut prints. His drive to make prints reached to his fellow ONCHI and FUJIMORI Shizuo, coming to a fruition of the print magazine *Tsukuhae*, an apex of *Sosaku-Hanga*. KAYAMA's portfolio was later realized in the *Tsukuhae* magazine entitled *Vestiges of Fleeting Dreams*.

Learning traditional Japanese woodcut technique, KAYAMA Kotori had an influence on the following *Sosaku-Hanga*. In this exhibition, his footmarks will be followed with approximately 80 works, including works by his friends.

General Information

The Museum of Modern Art, Wakayama, the 1st floor

September 14, 2013 - December 1, 2013

Open 9:30 to 17:00

Closed on Monday (Open on Holiday Mondays, closed on the following Tuesday)

Adults: 340yen, Students: 230yen [free under 18 (high school pupils), over 65 and the disabled]

Supported by: the Agency for Cultural Affairs Government of Japan in the fiscal 2013

Exhibitions in the same period:

Eitaro ISHIGAKI, Retrospective, September 3 - October 20, 2013

Collections: Autumn 2013, September 14 - December 1, 2013 (simultaneous with *KAYAMA Kotori*)

The Museum of Modern Art, Wakayama

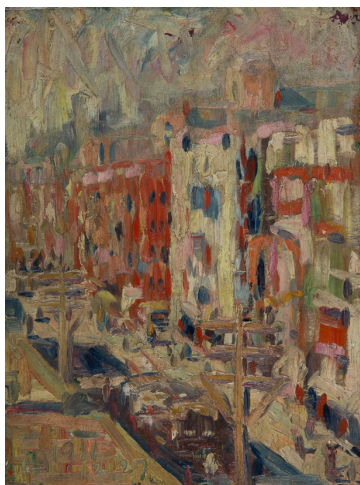
1-4-14 Fukiage, Wakayama, 640-8137, JAPAN

Tel: +81 (0)73 436 8690

Fax: +81 (0)73 436 1337

<http://www.momaw.jp/>

PLATES



1. KAYAMA Kotori, *Landscape*, 1911, oil on wood panel



3. KAYAMA Kotori, *New Year's Card*, 1912, woodcut print on paper



5. KAYAMA Kotori, *Winter Landscape in Fukagawa*, 1912, woodcut print on paper



2. KAYAMA Kotori, *Post Card to ONCHI Koshiro*, 1912, ink and watercolor on paper



4. KAYAMA Kotori, *Nostalgia*, 1913, woodcut print on paper