

# Collections: Spring 2014

-March 1-May 25, 2014-



SAEKI Yuzo, *Around the Observatoire*, 1927, Oil on Canvas

It is with great pleasure that we present *Collections: Spring 2014*.

The Museum of Modern Art, Wakayama, whose predecessor was the Wakayama Prefectural Museum (founded in 1963), inaugurated in the building of Kenmin Bunka Kaikan (the Cultural Hall for Citizens) in November 1970. It kept mainly focusing on introducing artists related to Wakayama after the Meiji Restoration and started its activities anew at the current building designed by architect KUROKAWA Kisho in 1994. On the occasion of the relocation, it expanded the range of the collection, and it now holds more than 10,000-piece of works from home and abroad.

The exhibits at Collection Galleries are changed seasonally with various aspects, and this time with three sections: *Artists from Wakayama and Modern Art*, *Sculptures from Contemporaries* and *Colorfully Colorful Colors*. The first section *Artists from Wakayama and Modern Art* introduces the tendency of the Modern Art in Japan with works by local artists, which explored its own identity after being exposed to the western culture in the Meiji Era.

The following section *Sculptures from Contemporaries* is a related display to the simultaneous exhibition *TATEHATA Kakuzo and the Postwar Sculptures* (22. April-6. July.) In that exhibition, the achievement of the Japanese pioneer sculptor who kept leading the sculptural expression in the postwar will be introduced with his Japanese contemporaries. But we would also introduce the expansion of the sculptures in the modern period including artists from abroad here in this Collection Galleries.

The last section *Colorfully Colorful Colors* is also related to the coincident: *the Realm in Monochrome*. In contrast with the expressions only with black and white, works with various colors and those that make us feel the power of colors will be exhibited.

Approximately 70 works will be on view.

#### **[General Information]**

The Museum of Modern Art, Wakayama, the 1st floor

March 1 - May 25, 2014

Open 9:30 to 17:00

Closed on Monday (Open on National Holidays, but closed on the following Tuesday)

Adults: 340yen, Students: 230yen [free under 18 (high school pupils), over 65 and the disabled]

#### **[Exhibitions in the same period]**

**Thinking on HANGA:** February 18- March 30

**TATEHATA Kakuzo and the Postwar Sculptures:** April 22-July 6

**The Realm in Monochrome:** March 1 - May 25 (the coincident)

#### **The Museum of Modern Art, Wakayama**

1-4-14 Fukiage, Wakayama, 640-8137, JAPAN

Tel: +81 (0)73 436 8690

Fax: +81 (0)73 436 1337

<http://www.momaw.jp>

## 【Selected Exhibits】



1. YOROZU Tetsugoro, *Remaining Snow*, 1915, Oil on Canvas

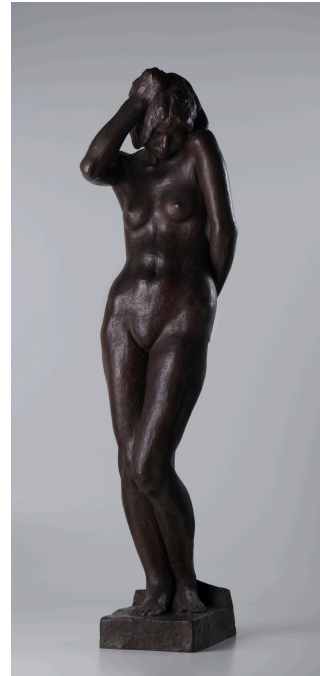


2. SAEKI Yuzo, *Around the Observatoire*, 1927, Oil on Canvas

3.  
HAYAMI  
Gyoshuu,  
*Bamboo Thicket*,  
1928,  
Pigment  
on Silk



4. TATEHATA  
Taimu, *A  
Woman deeply  
moved*, 1932,  
Bronze



5. USAMI Keiji, *The aquarium within an aquarium No.2*, 1967, Oil on Canvas