

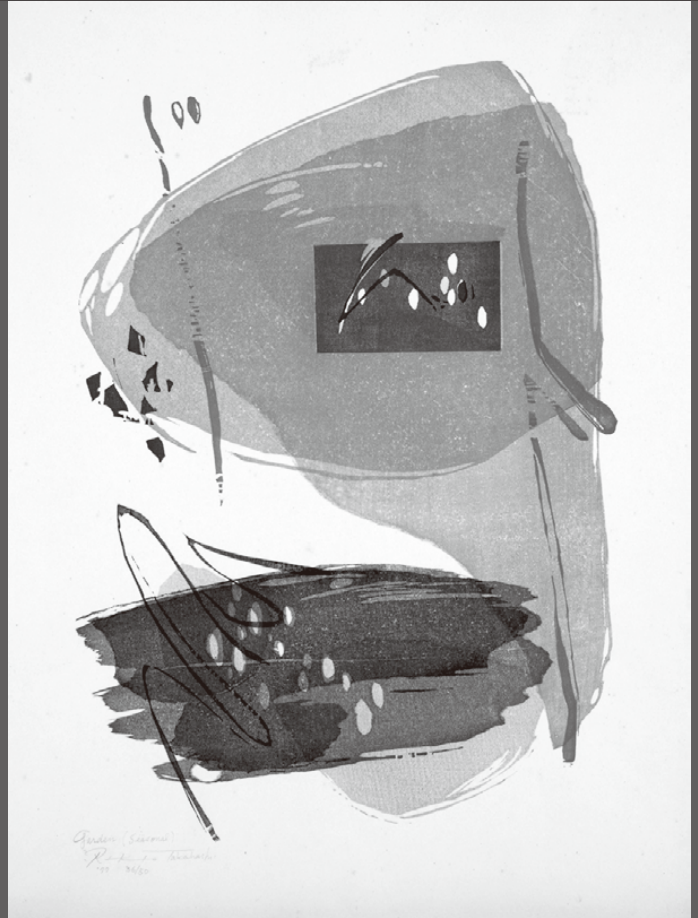
SCENERY OF GARDENS

TAKAHASHI RIKIO'S WOODBLOCK PRINTS

This exhibition traces TAKAHASHI Rikio's work with about 60 prints from 1955 to 1990s.

After the World War II, TAKAHASHI Rikio (1917–1998) came back to Tokyo from Suzaka, Nagano, where he had stayed for evacuation. One day in 1949, he visited ONCHI Koshiro for the first time, but on that day, ONCHI dismissed the *Ichibokukai group*, which literally means the first Thursday. The meeting was the opportunity for many print artists to gather at ONCHI's house once a month, on the first Thursday. However, TAKAHASHI kept looking up ONCHI as his preceptor, and he pursued his original abstract expression of woodblock prints with a large influence from ONCHI.

TAKAHASHI visited many temples, shrines, and gardens in Kyoto during the ruined post-war period. That experience gave him



▼ *Kyoto Series No.40 Festival*, 1966



▲ *Garden (Seasonal)*, 1977

Japanese sense of beauty, and it was a process for him to get back himself. These works were highly acclaimed in the United States.

His print works show us scenery with delicate nuance with tint colors and soft brush strokes. Those must have been his tranquility that he had found in his mind.

▼ General Information

- April 28 – July 8, 2018
- Open 9:30 to 17:00
- Closed on Monday, except for April 30 (May 1 is closed instead)

▼ Admission

- Adults: 340 (270) yen, Students: 230 (180) yen. Prices in brackets indicate group rate.

▼ Admission Free

- Under 18 (high school pupils), over 65 and the disabled/ Free entrance for college students on April 28, May 26, and June 23. (Every fourth Saturday: Kiyo cultural foundation day)

The Museum of
Modern Art,
Wakayama



MOMAW

1-4-14 Fukiage, Wakayama,
640-8137, JAPAN
TEL: +81-(0)73-436-8690
FAX: +81-(0)73-436-1337
<http://www.momaw.jp>